

prepDATA2

User Manual

Version 1.1

09/16/2024



Table of Contents

- 1. INTRODUCTION3
 - 1.1 Overview.....3
- 2. GETTING STARTED.....4
 - 2.1 Installation4
 - 2.2 Start the Application.....4
 - 2.3 Uninstall the Application.....4
- 3. OPEN DATA5
 - 3.1 Open Data from Drive.....5
 - 3.2 Open Data from prepASH.....5
 - 3.2.1 Select a prepASH.....6
 - 3.2.2 Select Data.....7
 - 3.2.3 Data Info.....7
 - 3.3 Live Watch.....7
- 4. CHART8
 - 4.1 Zoom and Scroll8
- 5. RESULT.....9
 - 5.1 Result Editor9
 - 5.2 Result Table.....10
- 6. STATISTIC11
 - 6.1 Statistic Editor.....11
 - 6.2 Statistic Table11
- 7. TOOLS.....12
 - 7.1 Export to Excel12
 - 7.2 Report12

1. Introduction

Our free prepDATA software enables comprehensive data analysis of your results.

1.1 Overview

prepDATA offers the following functions.

- Search and filter data from prepASH or drive.
- Customize the visualization using docking windows.
- Monitor the analysis process in real time.
- Define additional result and statistics groups.
- Export data to an Excel file. Microsoft Office (Excel) does not need to be installed.
- Create custom reports.
- Create and edit sample lists.

2. Getting Started

prepDATA2 is designed for Windows 7 / 8 / 10 and Windows 11 all with 32 or 64.

2.1 Installation

1. Start the installation by double-clicking "setup_prepDATA2.exe".
2. Follow the on-screen instructions.

2.2 Start the Application

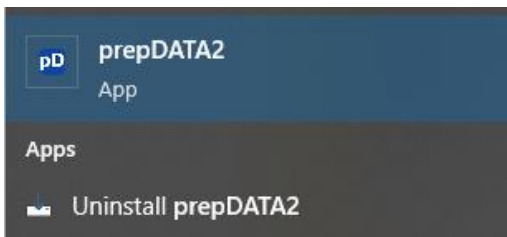


Start the program by double-clicking the desktop icon "prepDATA2".



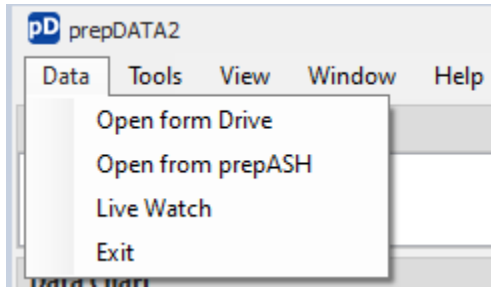
If no desktop icon has been created, type "prepDATA2" into the Windows search bar and press the Enter key.

2.3 Uninstall the Application



Type "prepDATA2" into the Windows search bar and select "uninstall prepDATA2".

3. Open Data

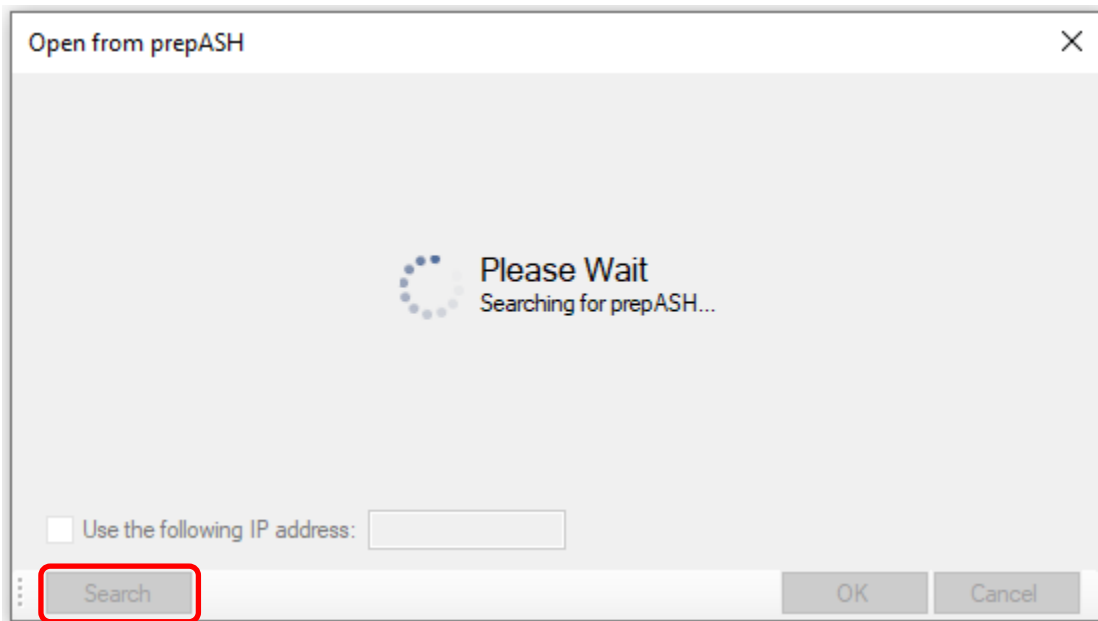


Select one of the options under the “Data” menu item to open a measurement.

3.1 Open Data from Drive

In the file dialog, select a file with the extension “_analyses.dat” or “_backup.dat” and click “Open”.

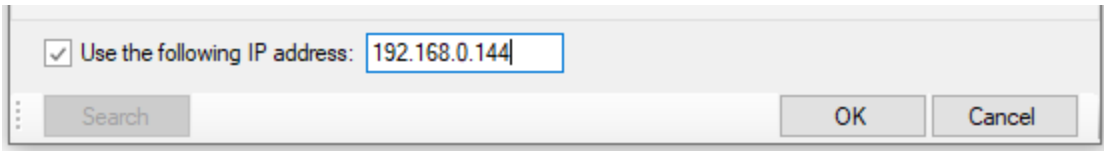
3.2 Open Data from prepASH



When you open data from a prepASH device for the first time, you must localize the device by clicking on “Search” to search the network for connected prepASH devices.

Hint

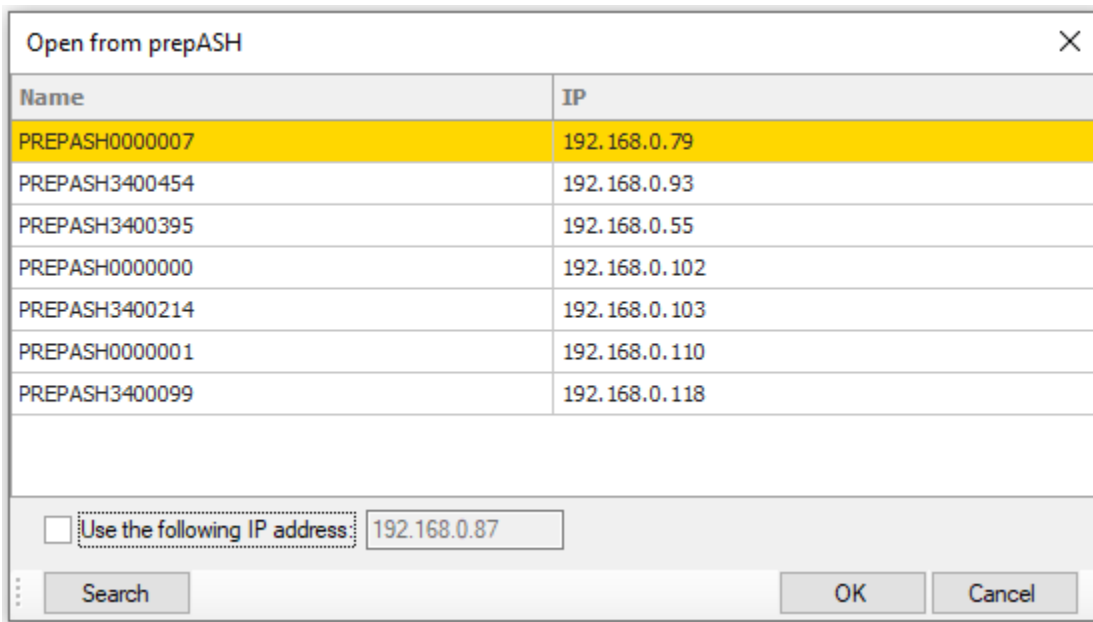
To be able to use the search function, the PC and prepASH must be in the same subnet. If you have problems with the network, please contact your administrator.



 Alternative

If the prepASH device is not in the same subnet, you can activate the “Use the following IP address” checkbox and enter the IP address of the prepASH device.

3.2.1 Select a prepASH



The prepASH devices found in the network are listed. Confirm your selection with “OK”. Confirm your selection with “OK”.

3.2.2 Select Data

Select Data	
Source: PREPASH0000007	
<input type="text" value="test"/> <input type="button" value="Find"/>	
Analysis	Author
usvTest5	PRODUCTION
usvTest4	PRODUCTION

After selecting a prepASH device, a list displaying all available measurements will appear. Use the “Enter text to search...” field to filter the data across all columns or use the filter field under the column headings. Finally, select a line and click on “OK” to open the data.

3.2.3 Data Info

Data Info					
	Analysis	User	Start	End	Source
<input type="button" value="Select"/>	milchpulver_004	Administrator	15.04.2024 14:06:35	15.04.2024 20:44:12	PREPASH0000007

Data information is displayed in the Data Info Panel.

Hint

To open another measurement from the selected prepASH device, simply click the ‘Select’ button.

3.3 Live Watch

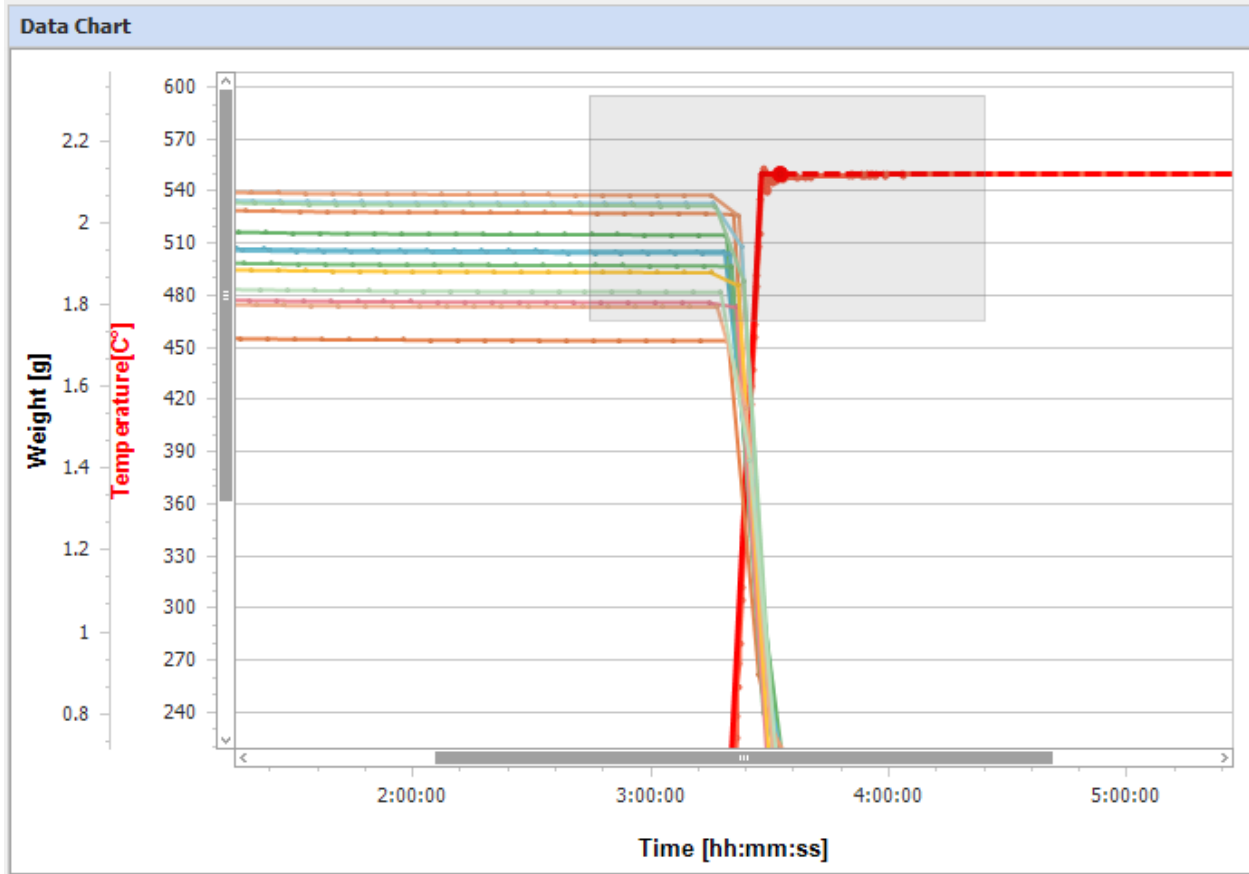
Select a prepASH device (Chapter 3.2.1) and click on “OK”.

Data Info					
	Source	Last Update	Cover	State	Temperature
LIVE	PREPASH0000007	17.07.2024 12:17:12	open	idle	25 °C

The “Last update” field indicates the time at which the data was last updated.

4. Chart

4.1 Zoom and Scroll



Press the Shift key on the keyboard and select the area you want to enlarge. Alternatively, you can also use the scroll wheel on your mouse. Then grab an area of the diagram with the mouse to scroll.

5. Result

5.1 Result Editor

Result						
Method	Step	Result Name	Calculation Mode	Unit	Relative to	Calculation
<input checked="" type="checkbox"/>	2	R1	rest	%	initial	
<input checked="" type="checkbox"/>	4	R2	rest	%	S2	
Additional	Step	Result Name	Calculation Mode	Unit	Relative to	Calculation
<input checked="" type="checkbox"/>	3	R3	free	g		'I'-S3'

The results defined in the method are displayed in the upper table. These can be added or removed using the checkboxes.

Further results can be added in the table below. If you select the “free” Calculation Mode, you can define your own result calculations. Enter the corresponding formula in the “Calculation” field.

The following parameters are available.

'I' Initial Value

'C' Current Value

'S' Step Value



Hint

The parameters must be placed between apostrophe marks.

The following basic arithmetic operations are available for the Calculation field.

“+” Addition

“-” Subtraction

“*” Multiplication

“/” Division

Example formula: 'C' / 'I' * 1000

5.2 Result Table

	Pos.	Sample	ID	Tare[g]	Initial[g]	CW	AS	Result Name	R
✓	1	S		23.6412	1.7885	✓	✓	R1 R2 R3	
✓	2	S		23.6810	1.7289	X	✓	R1 R2 R3	

Reference[g]	Time	Residue[g]	Time	Result		Calc	Rel. to	Calculation
1.7885	00:00:00	1.7059	03:09:36	95.382	%	rest	initial	
1.7059	03:09:36	0.1350	06:26:42	7.914	%	rest	S2	
		0.1348	06:32:28	0.0791	%	free		(S4÷S2)
1.7289	00:00:00	1.6486	03:09:50	95.355	%	rest	initial	
1.6486	03:09:50	0.1305	06:26:57	7.916	%	rest	S2	
		0.1302	06:32:43	0.0792	%	free		(S4÷S2)

The first column shows whether the sample was active (✓) or not (X).

The CW column indicates whether checkweigher was in range (✓) or not (X).

The AS column indicates whether autostop was reached (✓) or not (⚠).

6. Statistic

6.1 Statistic Editor

Sample items can be grouped together.

Statistic				
	Pos.	Group	Sample	ID
✓	1	A	S	
✓	2	A1	S	
✓	3	A	S	

To assign a sample to another group, enter the corresponding group name in the Group field.

6.2 Statistic Table

Group: A

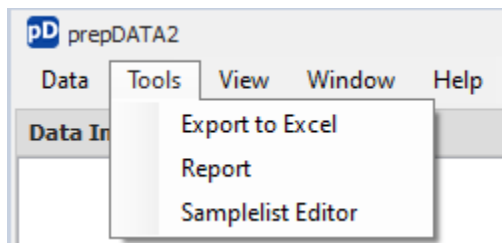
Result Name	Pos.	n		Initial		Residue		Result		Definition	Calculation
R1	1,3,4	3	mean	2.00863	g	1.91677	g	95.42400	%	rest[%]/initial	
			std	0.19118	g	0.18321	g	0.06183	%		
			rstd	9.51775	%	9.55811	%	0.06480	%		
R2	1,3,4	3	mean	2.00863	g	0.15150	g	7.90433	%	rest[%]/S2	
			std	0.19118	g	0.01434	g	0.00839	%		
			rstd	9.51775	%	9.46246	%	0.10610	%		
R3	1,3,4	3	mean	2.00863	g	0.15133	g	0.07903	%	free[%]	('S4'+ 'S2')
			std	0.19118	g	0.01436	g	0.00006	%		
			rstd	9.51775	%	9.48930	%	0.07305	%		

mean:
$$\bar{x} = \frac{\sum_{i=1}^n x_i}{n}$$

std:
$$s = \sqrt{\frac{1}{N-1} \sum_{i=1}^N (x_i - \bar{x})^2}$$
 standard deviation

rstd:
$$rstd = \frac{std}{\bar{x}} \cdot 100\%$$
 relative standard deviation

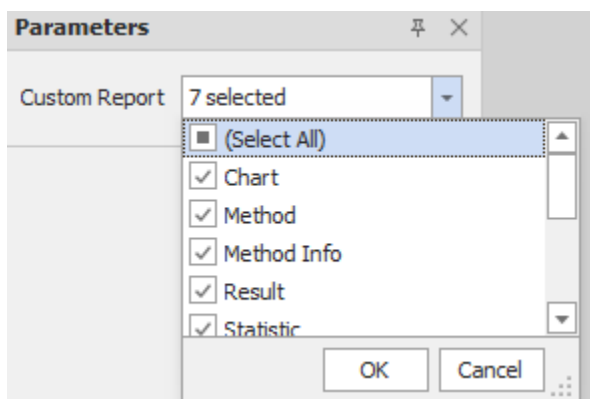
7. Tools



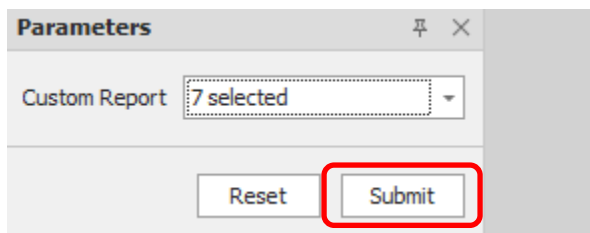
7.1 Export to Excel

In the file dialog, select the path in which the export file is to be saved and press the “Save” button.

7.2 Report



The report can be customized by selecting the checkboxes.



Press the “Submit” button to apply the changes.