

DC Ionizers Stat-Fan and Stat-Pen



Weighing of non-conductive materials, work with powdery samples, use of plastic or porcelain tare vessels and low air humidity may cause weighing errors because of static electricity.

The weighing errors arise through the electrostatic forces that act between the weighing sample and the surroundings.

These electrostatic charges can be measured by micro, semi-micro and analytical balances and lead to weighing errors.

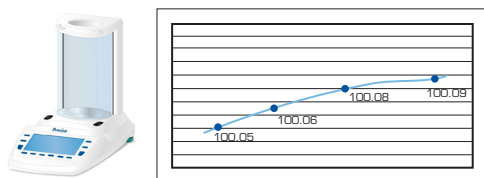
The most effective method to neutralize static charges is ionization. Ionizing units produce both positive and negative ions that are attracted by the unbalanced material, resulting in neutralization.

All you need to do is direct the air stream of the ionizer on all areas, which may be charged by the static electricity and in a couple of seconds static charges will be neutralized.

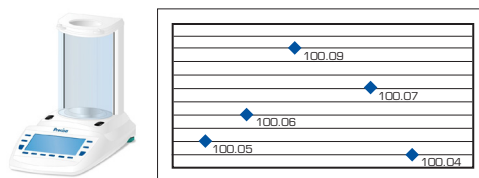
Use of the ionizer will ensure accurate results and fast response time of the balance.

Problems due to static electricity

Display drifts



Poor repeatability

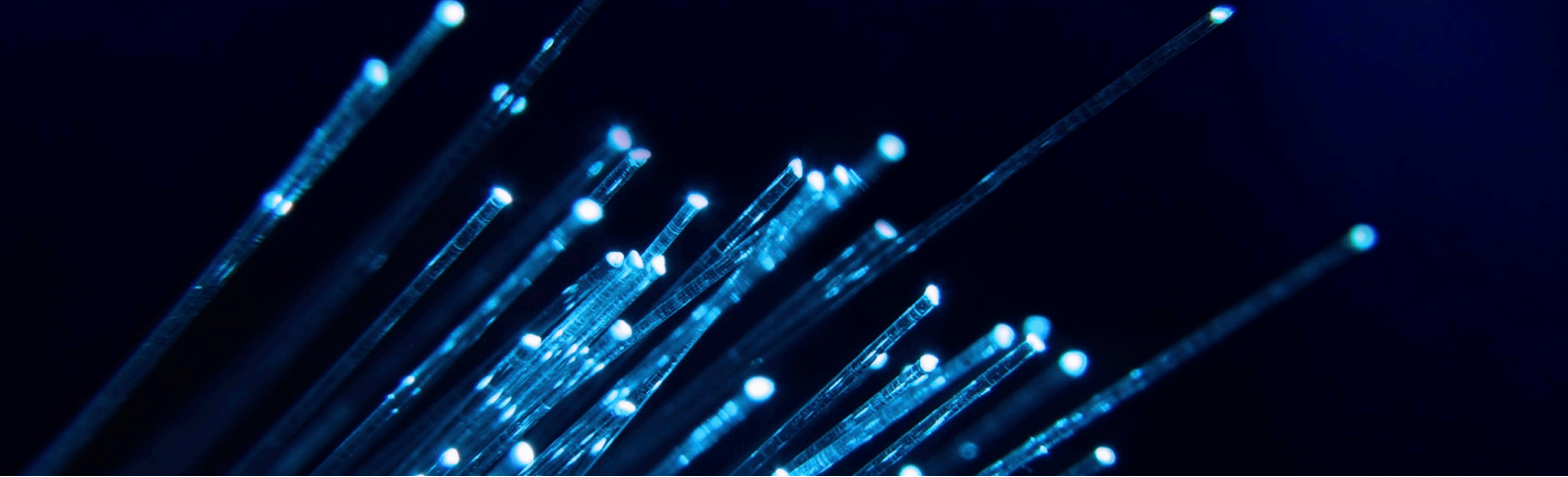


Measurement error (incorrect reading)



General recommendations to reduce development of static electricity:

- Work in areas with relative ambient humidity of $\geq 45\%$...50%
- If possible do not use containers made of non-conductive materials
- Neutralize possible static electricity on your samples and containers before weighing with Stat-Pen or Stat-Fan.



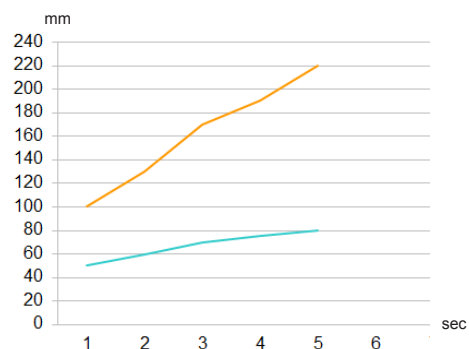
Stat-Fan - dc

Stat-Fan is a self-adjusting ion blower with an adjustable airflow, which produces positive and negative ions. Stat-Fan S will neutralise objects in its airstream.

- High quality
- Easy to use

Technical specifications:

- Power: 230V, 50 - 60Hz, 18W
or 115V, 50 - 60Hz, 18W
over external 18V adapter
- Neutralization: $< \pm 20V$
- Power: 2W
- Airflow: max 225 l/min
- Temp. range: 0-40° C



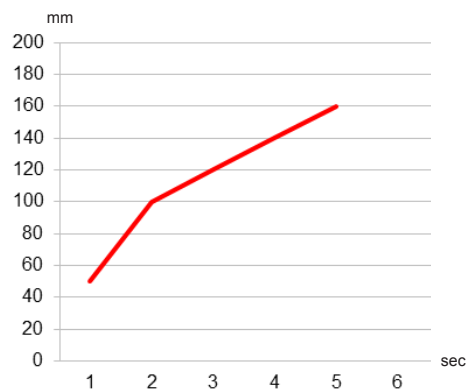
Stat-Pen - dc

Stat-Pen is an anti-static device, which neutralizes static charges, by the help of positive and negative ions. When Stat-Pen is activated it neutralizes all static charge wherever the wand is directed.

- High quality
- Powerful

Technical Specification

- Power supply: 90 - 264V,
50 - 60Hz, 9W
- Neutralization: $\pm 30V$
- Power: 0.1W
- Temp. range: -20+40° C
- IP-Class: IP60



Examples of Applications

