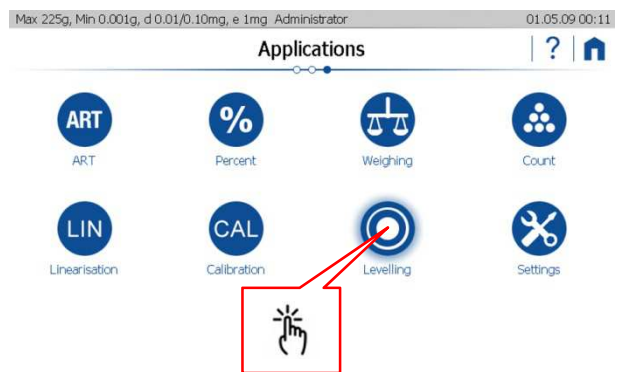
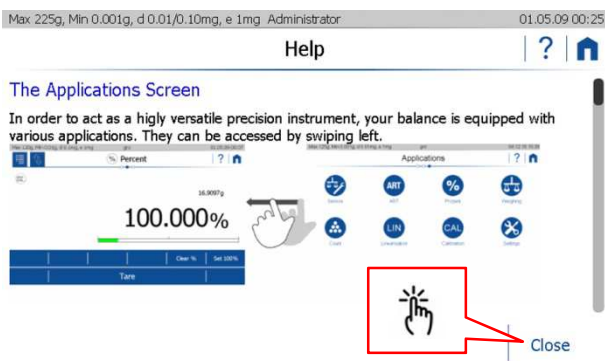
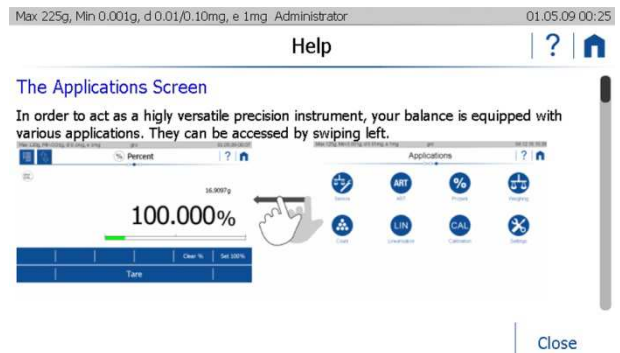
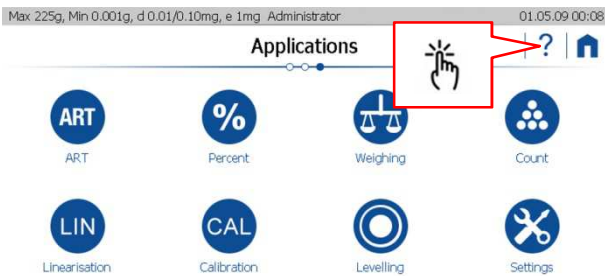
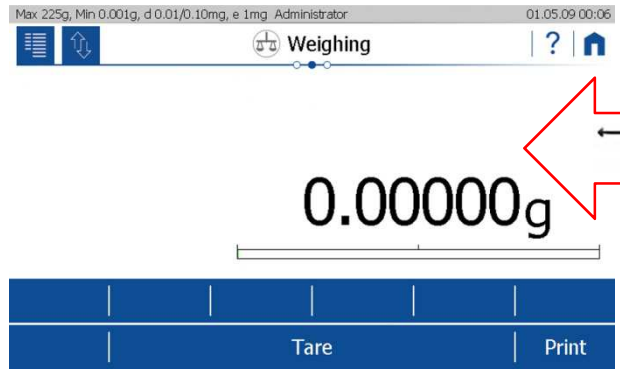
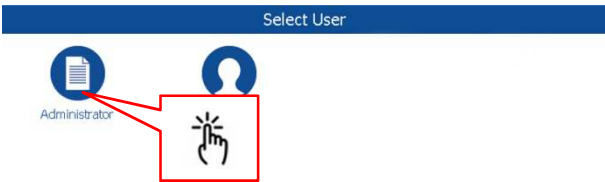
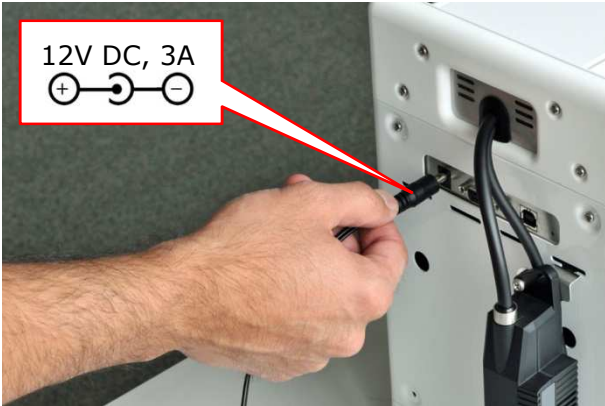
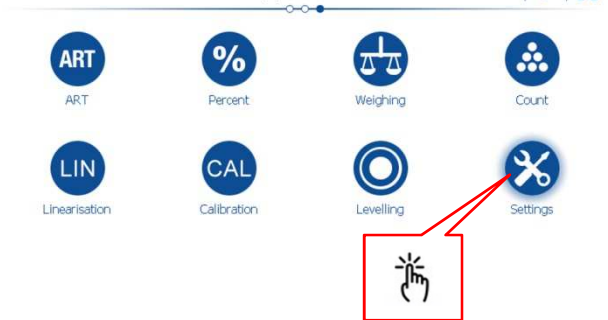
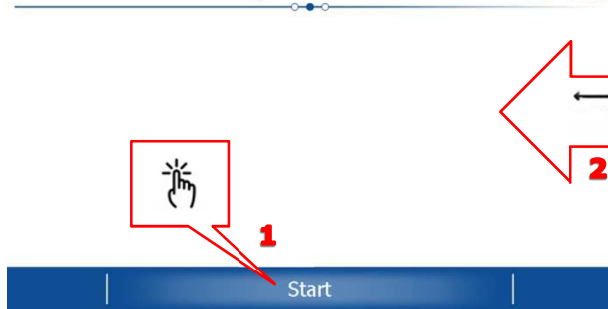
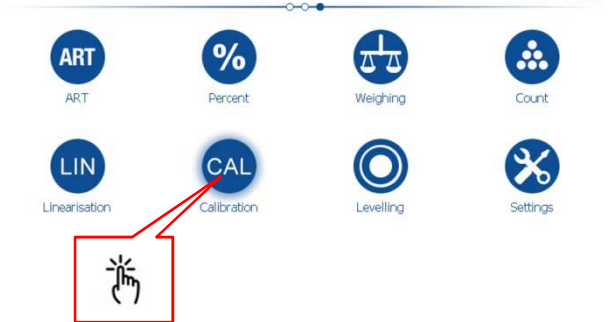
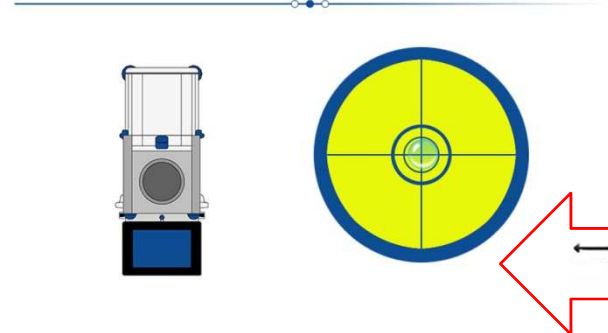
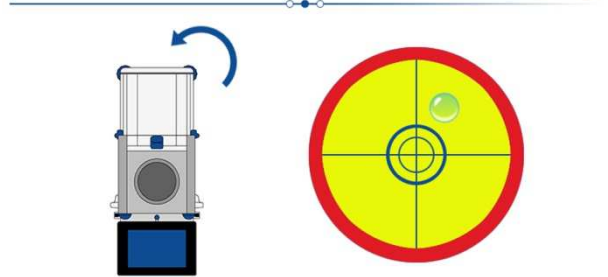


# 390

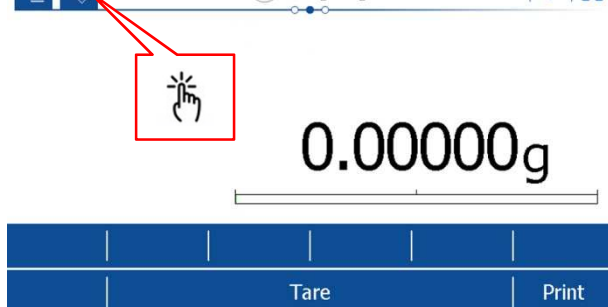


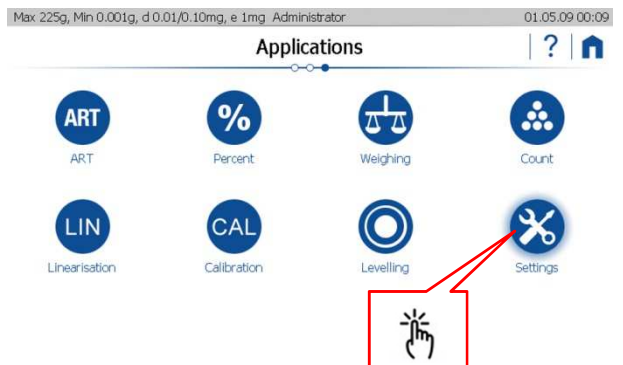
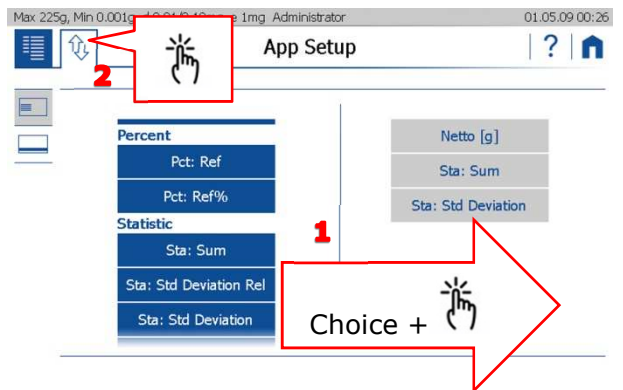
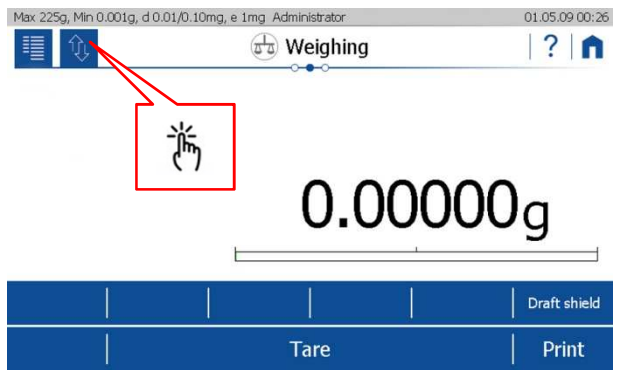
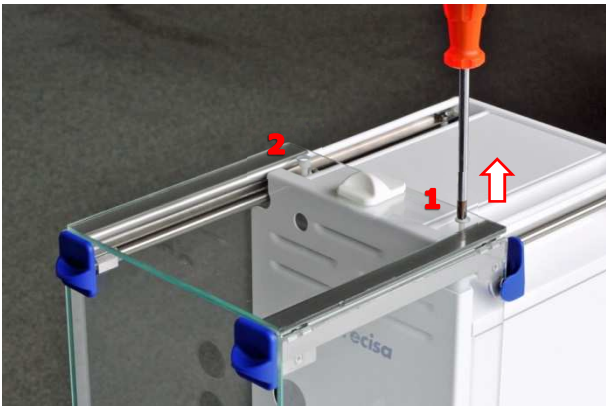
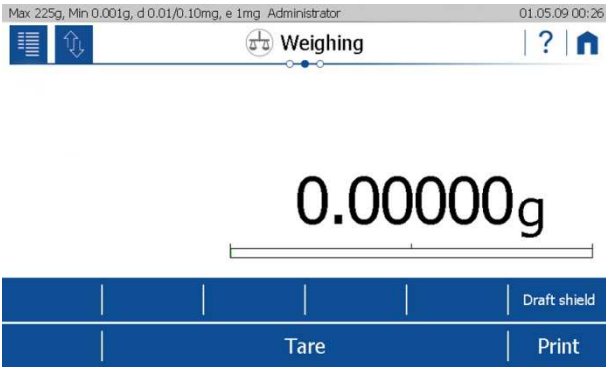
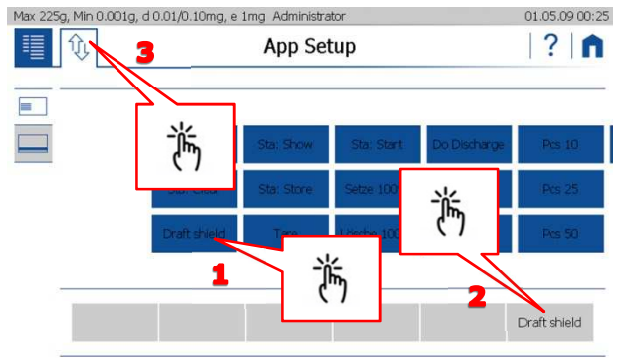


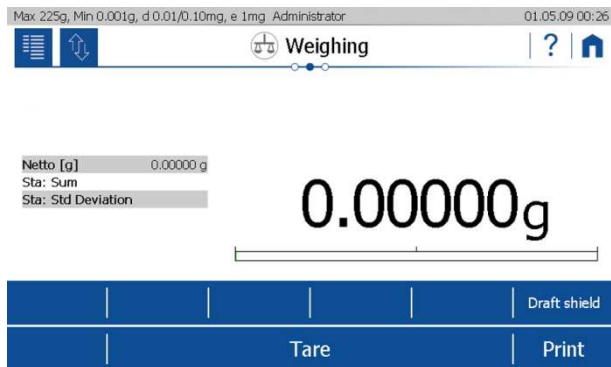
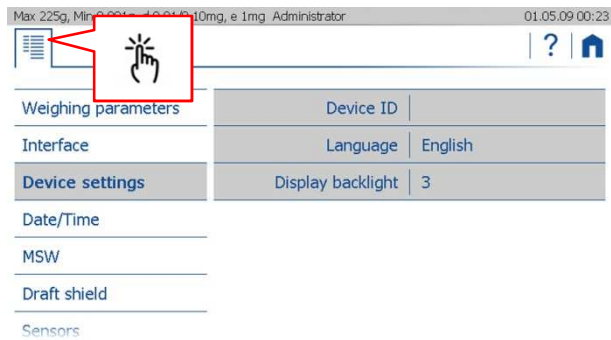
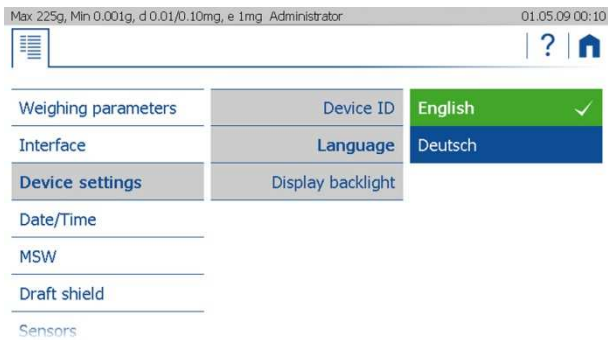
Weighing parameters	Impulse left	Draft shield
Interface	Impulse right	Draft shield
Device settings	Hold left	Off
Date/Time	Hold right	Off
MSW	Sensitivity	medium
Draft shield	Active Position	middle
Sensors		

Device settings	Impulse left	Off
Date/Time	Impulse right	Draft shield ✓
MSW	Hold left	Tare
Draft shield	Hold right	
Sensors	Sensitivity	
ECS	Active Position	
Calibration		

Weighing	Impulse left	Draft shield
Interface	Impulse right	Draft shield
Device settings	Hold left	Off
Date/Time	Hold right	Off
MSW	Sensitivity	medium
Draft shield	Active Position	middle
Sensors		







**TECHNICAL DATA – TECHNISCHE DATEN – CARACTÉRISTIQUES TECHNIQUES – DATOS TÉCNICOS**

Dimensions W x D x H:	
Maße B x T x H:	
Dimensions L x P x H:	
Dimensiones An x P x Al:	236 mm x 549 mm x 319 mm
Net weight:	
Nettogewicht:	
Poids net:	
Peso neto:	13 kg
Allowable ambient temperature:	
Zuläßige Umgebungstemperatur:	
Température ambiante admissible:	
Temperatura ambiente admisible:	5°C .. 40°C / 41°F .. 104°F
Allowable relative humidity, non condensing:	
Zuläßige relative Feuchtigkeit, nicht kondensierend:	
Hygrométrie relative admissible, sans condensation:	
Humedad relativa del aire admisible, sin condensación:	25 % .. 85 %
Mains connection:	
Netzanschluss:	
Raccordement électrique:	
Conexión a la red:	100 V AC .. 240 V AC, 50 .. 60 Hz, 1 A max.
Power consumption:	
Stromaufnahme:	
Puissance absorbée:	
Consumo de corriente:	18 W, 12 V DC, 1.5 A