

## prepASH Accessories

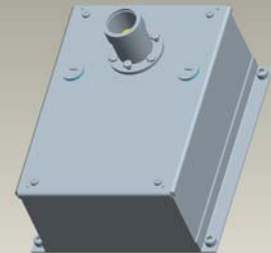
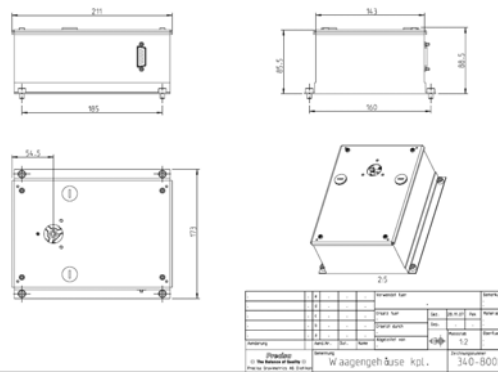
### Replacement balance

**320-9203-565**

Replacement  
balance, complete

for:

- prepASH 129
- prepASH 229
- prepASH 219



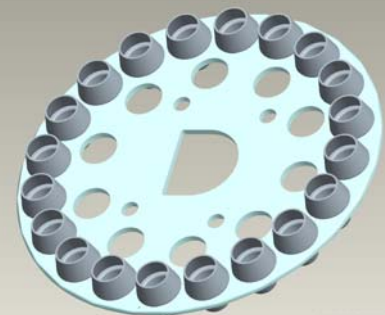
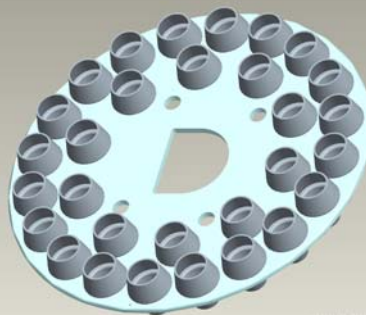
### Turn-tables

**340-4014**

Turn-table 29/19, SiC  
(30/20 crucibles)

for:

- prepASH 129
- prepASH 229
- prepASH 219

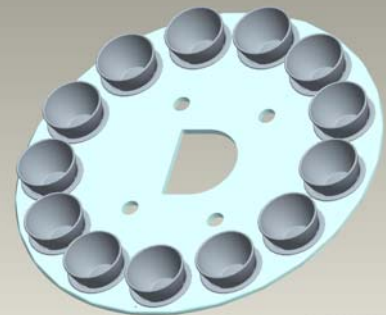


**340-4072**

Turn-table 12, SiC  
(13 crucibles)






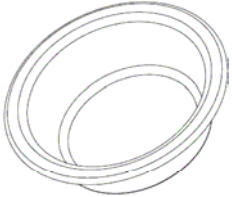
for:

- prepASH 129
- prepASH 229
- prepASH 219
- prepASH 212





## Crucibles and Adapters

<p><b>340-8030, set of 5 pieces</b> (340-5001)</p> <p><b>Crucible, silicate ceramic</b></p> <p>For turn-table 29/19</p>	<p>Porecelain – optimized material to reduce porosity.</p> <p>Supplied as standard for prepASH 129, prepASH 229 and prepASH 219, unless otherwise specified.</p>	 <p><b>35ml</b></p>
<p><b>340-8031, set of 5 pieces</b> (340-4071)</p> <p><b>Crucible, Al<sub>2</sub>O<sub>3</sub></b></p> <p>For turn-table 29/19</p>	<p>Smooth surface, high resistance, easy to clean.</p> <p>For use in procedures where the ash is to be used for further analysis (eg. AAS), as well as for basis ash-analysis.</p>	 <p><b>30ml</b></p>
<p><b>340-8032, set of 5 pieces</b> (340-4024)</p> <p><b>Crucible, Al<sub>2</sub>O<sub>3</sub> to be used together with 340-4025</b></p> <p>For turn-table 29/19</p>	<p>For protection against spattering of the specimen.</p> <p>For protection against oxidation of the specimen. Used with the N<sub>2</sub> atmosphere (determination of volatiles).</p>	 <p><b>26ml</b></p>
<p><b>340-8033, set of 5 pieces</b> (340-4025)</p> <p><b>Lid, Al<sub>2</sub>O<sub>3</sub> to be used together with 340-4024</b></p>	<p>For protection against spattering of the specimen.</p> <p>For protection against oxidation of the specimen. Used with the N<sub>2</sub> atmosphere (determination of volatiles).</p>	
<p><b>340-8034, set of 5 pieces</b> (PN 3950-128)</p> <p><b>Standard crucible, silicate ceramic</b></p> <p>Only for use with turn-table 12 with adapter</p>	<p>Flat crucibles enable better distribution of the specimen and thereby faster results.</p> <p>Delivered as standard for prepASH 212</p>	 <p><b>40ml</b></p>
<p><b>340-8035, set of 5 pieces</b> (340-4079)</p> <p><b>Adapter for standard crucibles, silicate ceramic</b></p> <p>Only for use with turn-table 12</p>	<p>Enables the use of standard or special crucibles:</p> <ul style="list-style-type: none"> <li>▪ fat crucibles for better distribution of the specimen and thereby faster results</li> <li>▪ special-material crucibles</li> </ul> <p>Delivered as standard for prepASH 212</p>	 <p>upper interior diameter 55mm lower interior diameter 44mm</p>