




Installation USB-Driver VCP (Virtual Com Port)

June 2009
Series 360

Nice to know

*The usage of the USB Interface of the balance series 360, require antecedent the installation of the VCP driver from  , VCP stands for Virtual COM Port. For interfaces which do support the serial interface a serial interface is emulated. The access on application layer happens then like on a physically available serial. This has the advantage that for existin application, which supports a serial interface no new driver needs engineered. **NB:** Driver stands also in balance user manual CD.*

For model range ES and EP

This instruction provides you the guideline to install the USB driver for the 360 series , actual model range ES and EP on your PC. This will allow the communication via the standard USB interface. The installation needs to executed only once, afterwards all Models of the 360 series will be recognised automaticly.

Important: By changing the PC, this instruction needs to be repeated.

NB: This instruction is a step by step procedure and therefore quite extensive. It shall help users with less practice to achieve the full installation without any problem.

NB I: This instruction is based on „print screen“ graphics, therefore be aware that the „print screens“ may differ from PC to PC.

NB II: For skilled users it will be enough to follow the instructions till step three.

Your
Precisa Gravimetrics AG
Service & Support Team



Driver Installation from



1. <http://www.ftdichip.com/>, Fig. 1: Click on „Drivers“.

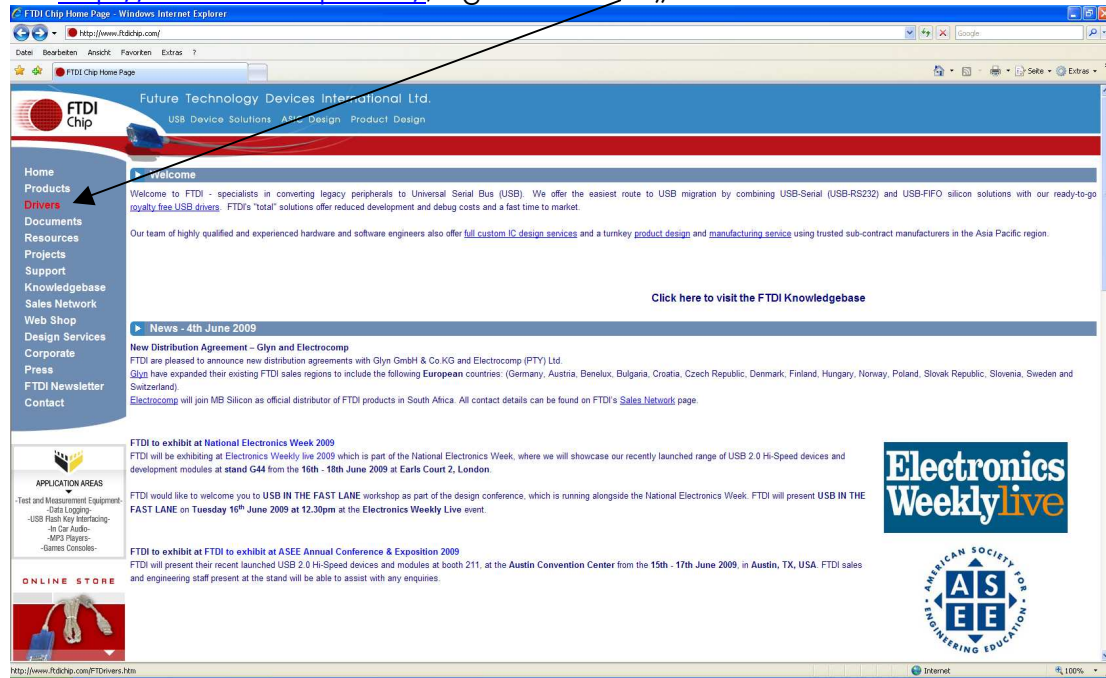


Fig.1

2. Fig. 2: Click on „VCP“

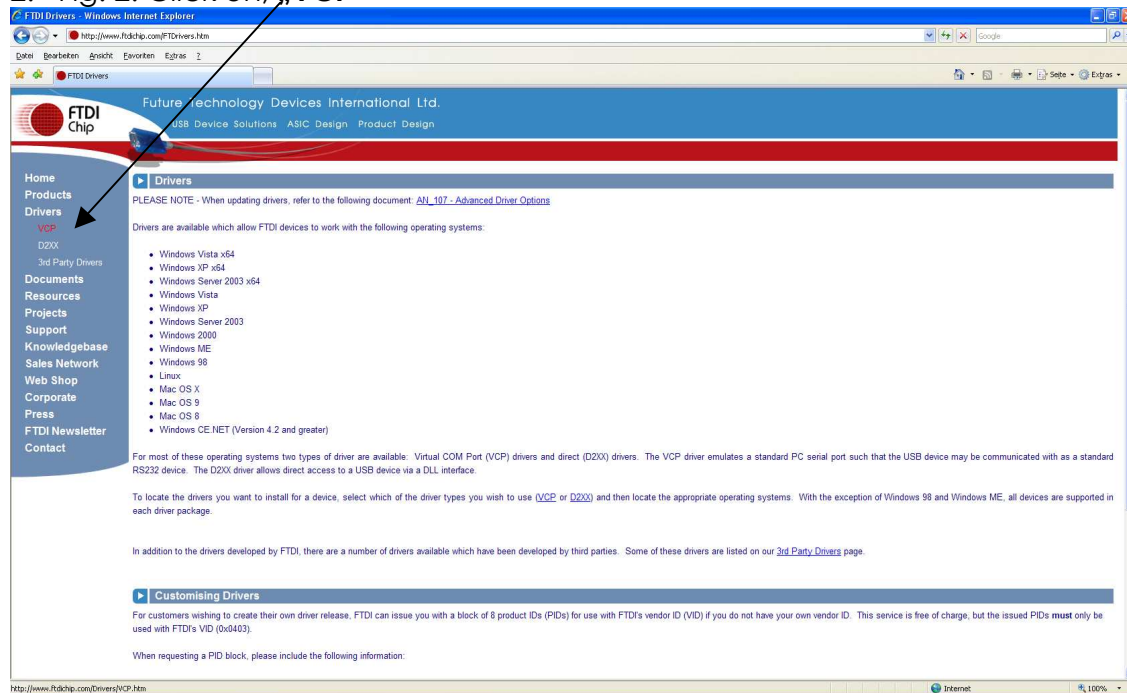


Fig.2



3. Fig. 3: Click on “2.04.16”

Operating System	Devices Supported	Driver Version	Release Date	Comments
Windows Server 2008 Windows Server 2008 x64 Windows Vista Windows Vista x64 Windows XP Windows XP x64 Windows 2000 Windows Sener 2003 Windows Server 2003 x64	FT2232H, FT4232H, FT232R, FT245R, FT232L, FT232B, FT245B, FT8U232AM, FT8U245AM	2.04.16	25th February 2009	Microsoft WHQL certified. Also available as a setup executable For custom VID and PID combinations see AN232R-03 Combined driver model (D2XX and VCP). Devices programmed as VCP will expose a COM port, as will AM and BM devices. Release Notes
Windows 98 Windows ME	FT232R, FT245R, FT232B, FT245B, FT8U232AM, FT8U245AM	1.09.06	25th November 2004	No longer actively supported. FT232L not supported.
Windows 98 Windows ME	FT2232	1.0.3	12th March 2004	No longer actively supported Only for use with Windows 98/ME. Not Microsoft WHQL certified. This driver can be used as a combined VCP and D2XX driver for Windows 2000/XP, but has been superseded by new versions. Remove Mac OS X 10.4 (Tiger) or later

Fig.3

4. Fig. 4: Click on „Open”.

Möchten Sie diese Datei öffnen oder speichern?

Name: CDM.2.04.16 WHQL Certified.zip
 Typ: WinZip File, 836 KB
 Von: www.ftdichip.com

Öffnen **Speichern** **Abbrechen**

Vor dem Öffnen dieses Dateityps immer bestätigen

Dateien aus dem Internet können nützlich sein, aber manche Dateien können eventuell auf dem Computer Schaden anrichten. Öffnen oder speichern Sie diese Datei nicht, falls Sie der Quelle nicht vertrauen. [Welches Risiko besteht?](#)

Fig. 4



5. Fig 5: Click on the “Extract” icon.

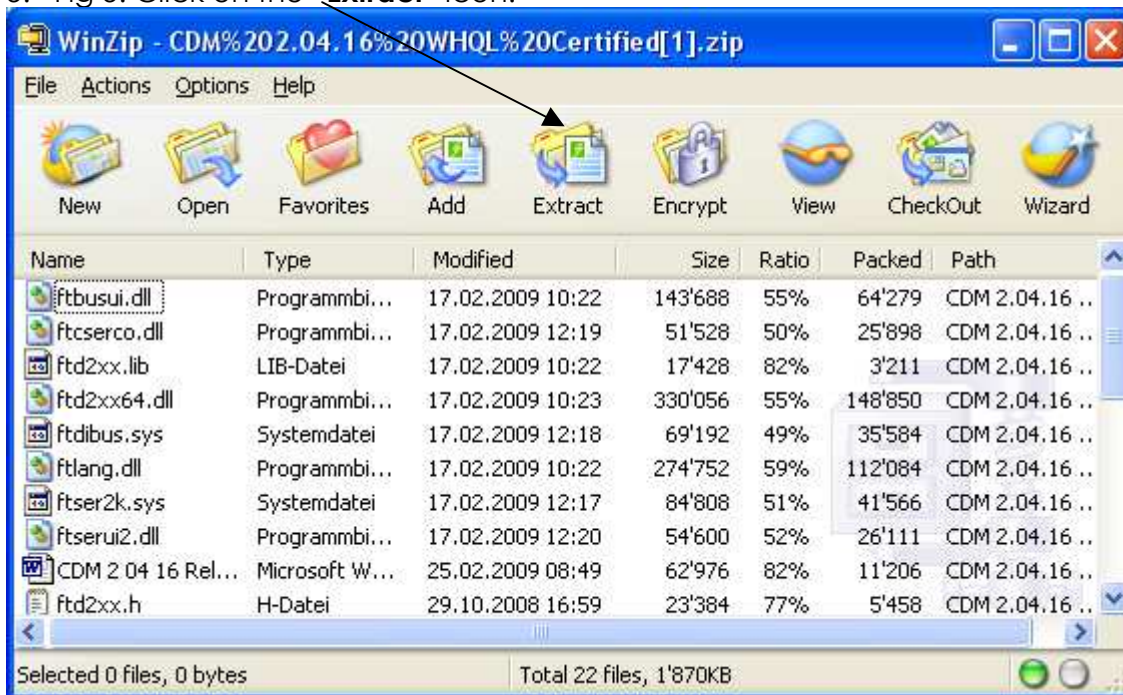


Fig. 5

6. Fig. 6: Create at a location of your wish a new folder. Click on „Extract“

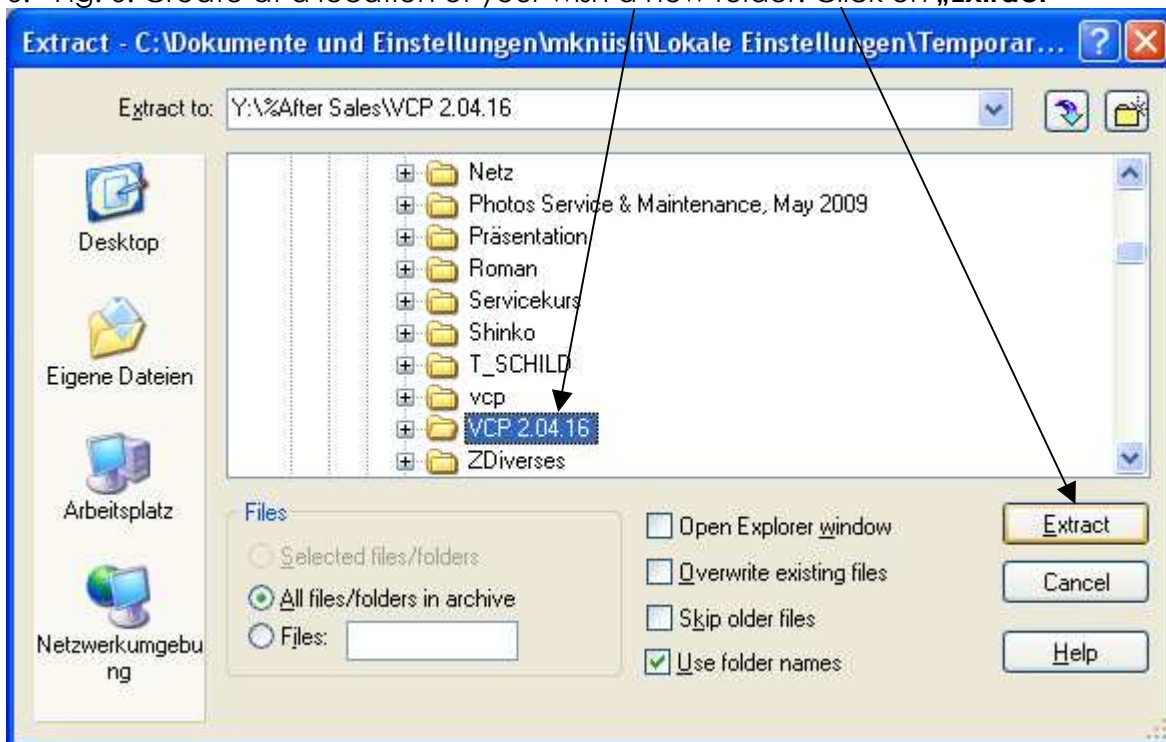


Fig. 6



7. Connect the balance to the mains.
8. Connect the provided USB-Cable first on PC then on balance side. The hardware assistant is activated. Fig. 7: Select **"No, not this time"** and click on **"Next>"**

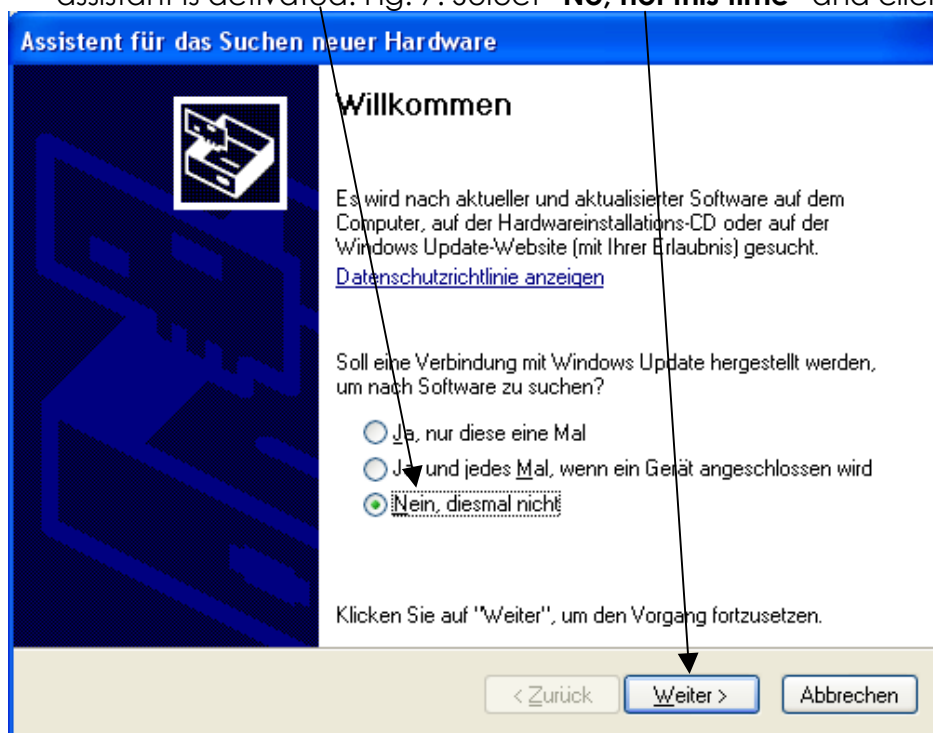



Fig. 7

9. Fig. 8: Select the source where the driver files shall be saved and click on **"Next>"**.




Assistent für das Suchen neuer Hardware



Mit diesem Assistenten können Sie Software für die folgende Hardwarekomponente installieren:

FT232R USB UART

 **Falls die Hardwarekomponente mit einer CD oder Diskette geliefert wurde, legen Sie diese jetzt ein.**

Wie möchten Sie vorgehen?

- Software automatisch installieren (empfohlen)
- Software von einer Liste oder bestimmten Quelle installieren (für fortgeschrittene Benutzer)

Klicken Sie auf "Weiter", um den Vorgang fortzusetzen.

< Zurück Weiter > Abbrechen

Fig. 8



10. Fig. 9: Click on „Browse“ and select the folder where the extracted driver files are saved and confirm by clicking on "OK" (Fig. 10, below)

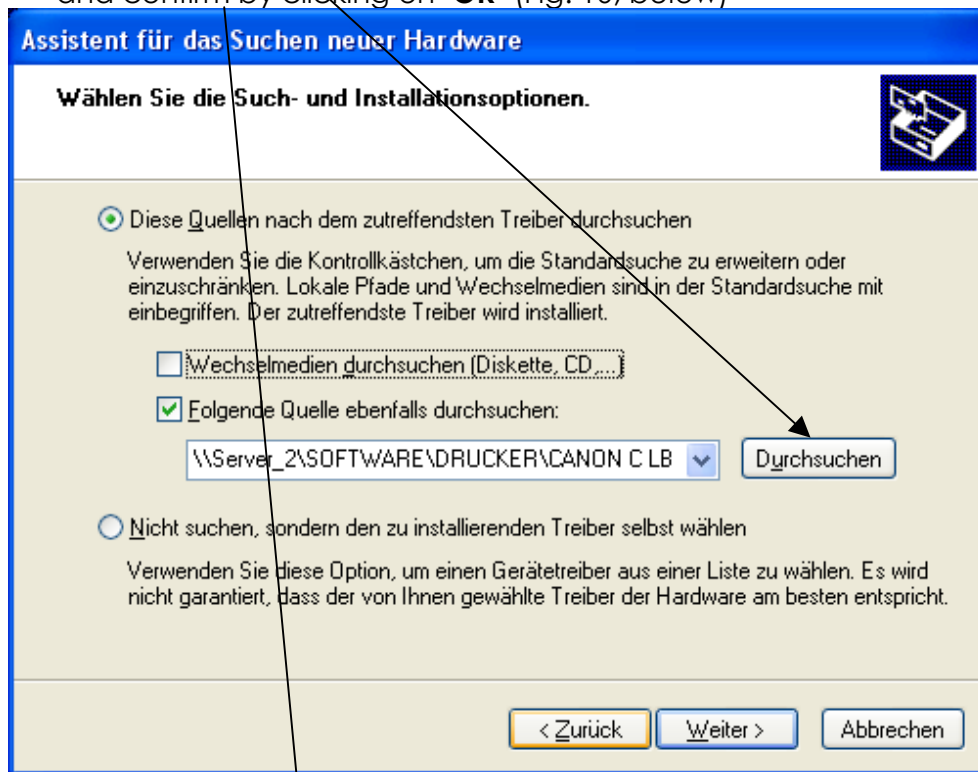


Fig. 9

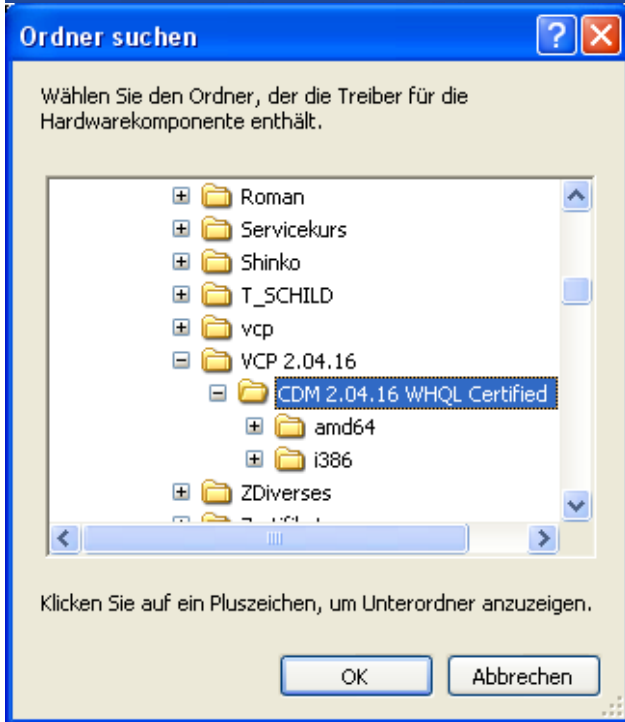


Fig. 10

11. Fig. 11: Click on „Next>“

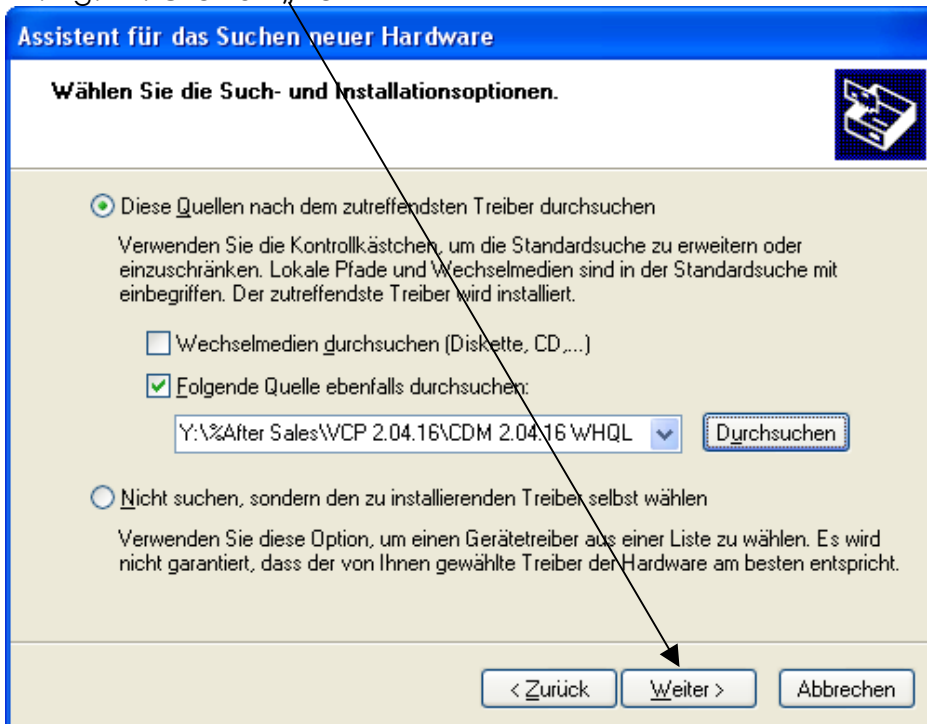


Fig. 11

12. Click on „Finish“



Fig. 12



13. Found new Hardware Wizard, continue with "Next>"

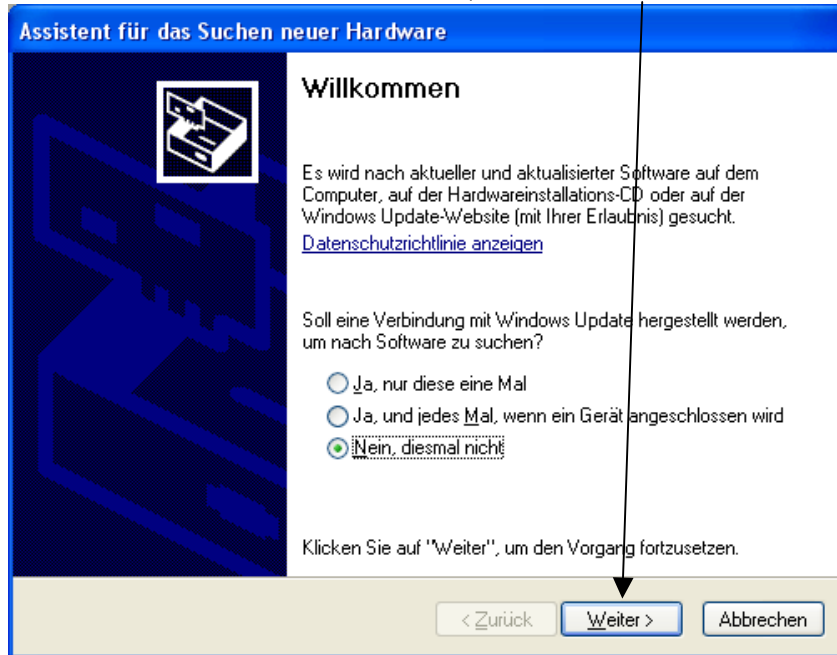


Fig. 13

14. Click on „Next>“

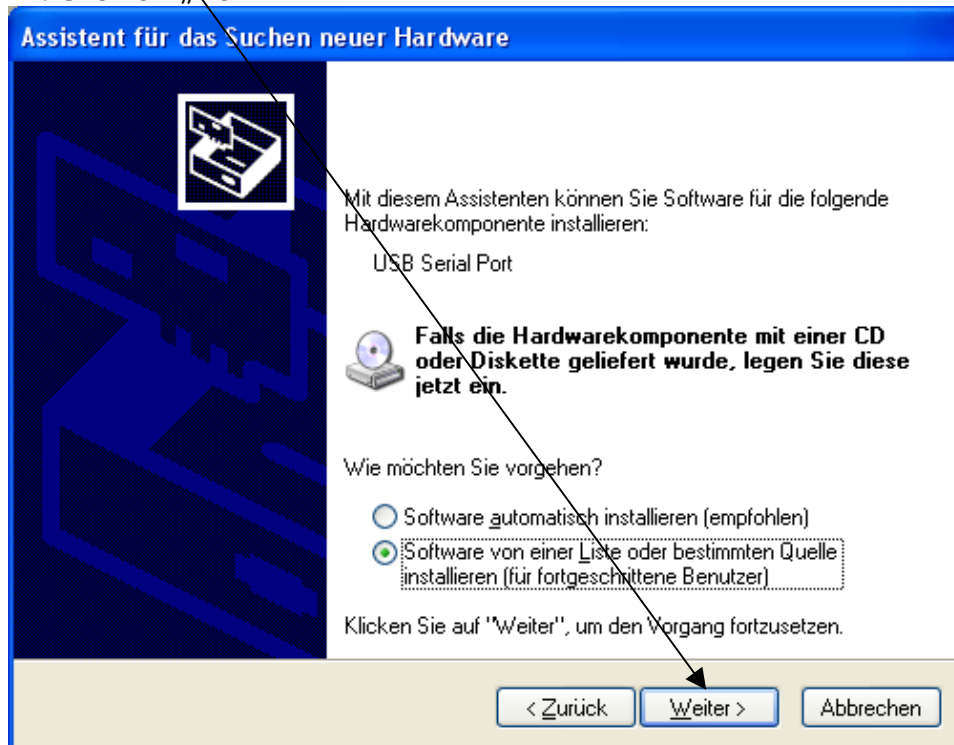


Fig. 14



15. Click on „Browse“

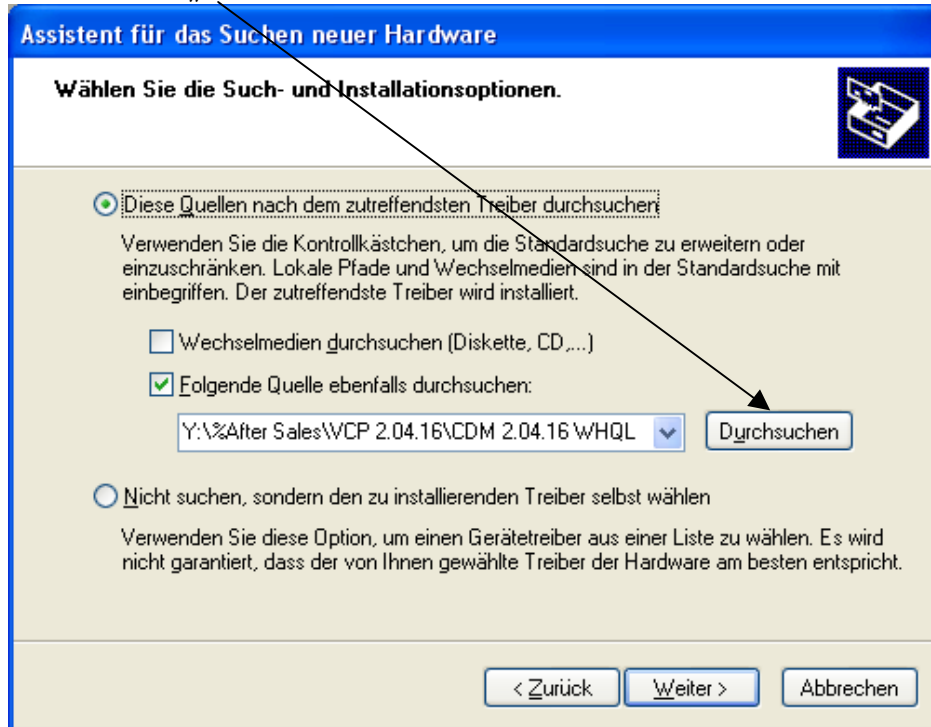


Fig. 15

16. Confirm the selected archive by clicking on „OK“

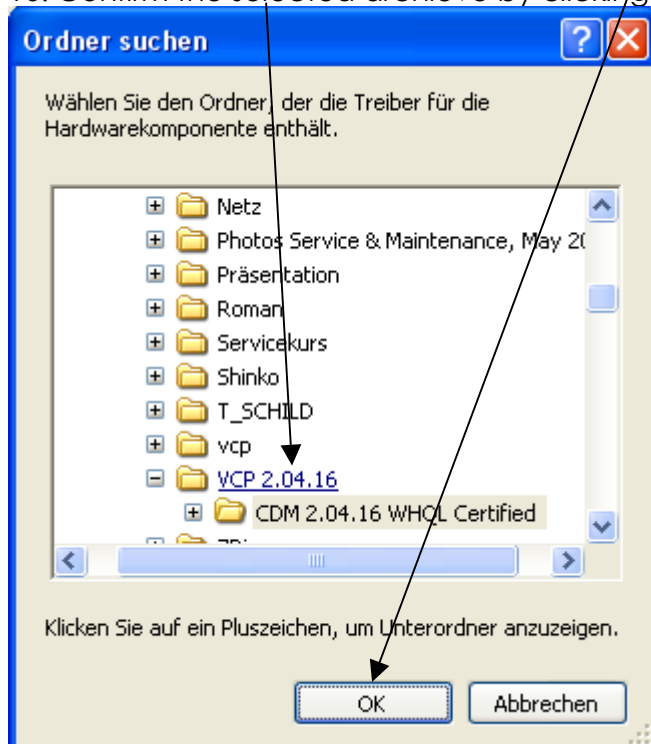


Fig. 16



17. Click on „Next>“

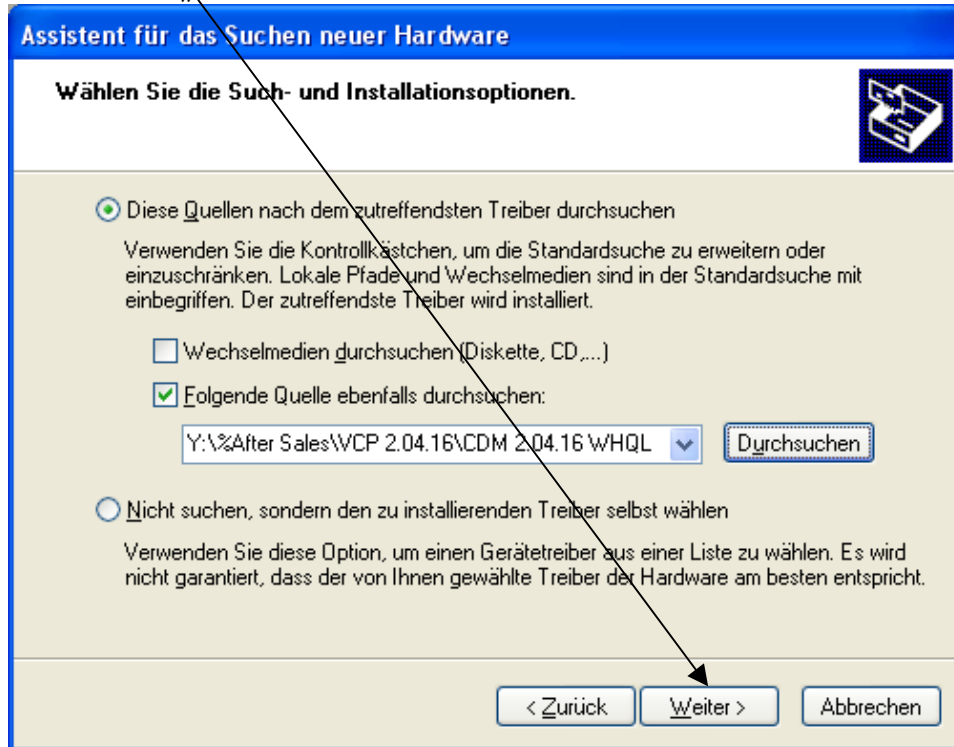


Fig. 17

18. Installation is running

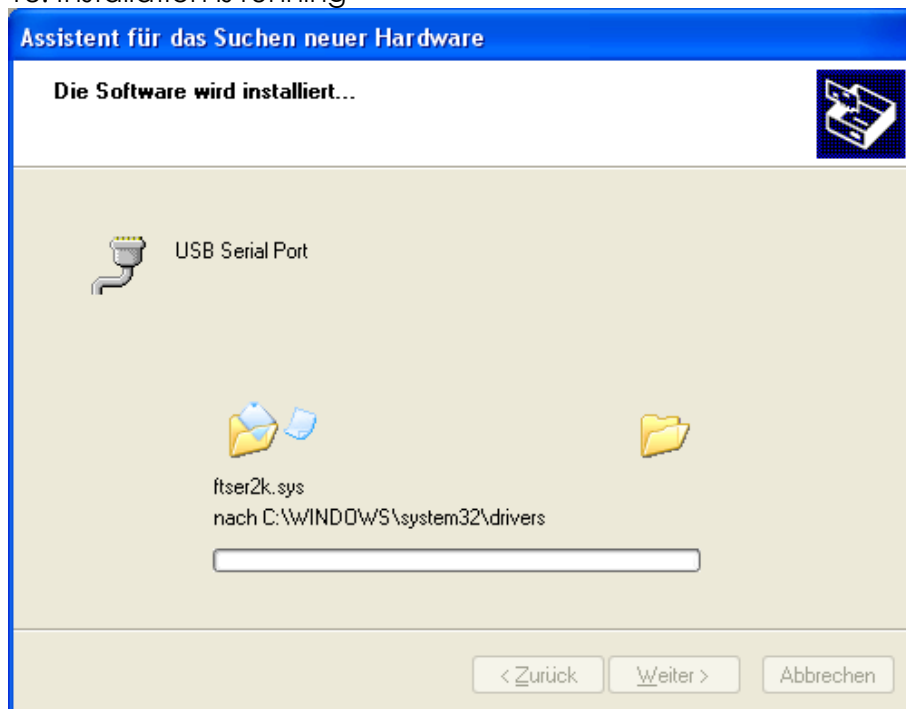


Fig. 18



18. Click on „**Finish**“, the installation is terminated.





New COM Port

After the full installation of the VCP-Driver, also a new COM-Port is opened. Which COM-Port no. has been assigned can be checked in system properties, Hardware – Devicemanager. How to access see here after.

Access version 1

1. Press contemporaneously the key combination „Windows“ and „Break“ to get to the **system property** windows. Fig. 20.
2. Click on „**Hardware**“

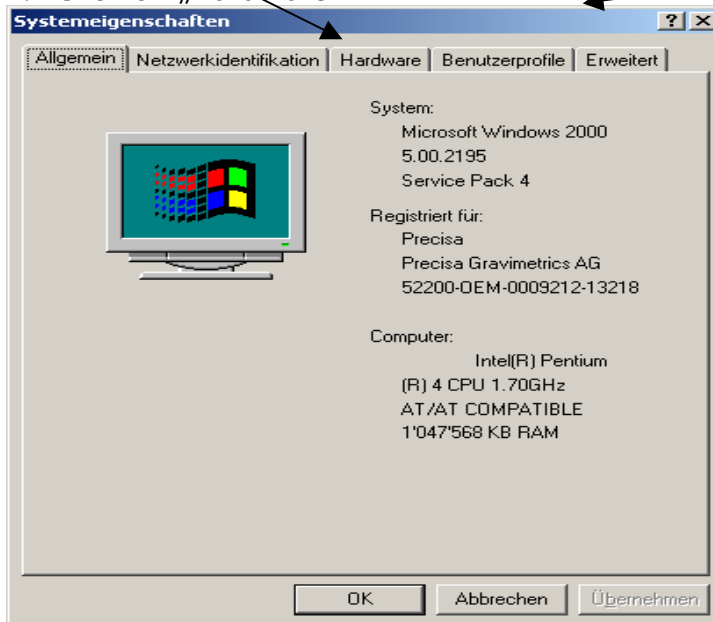


Fig. 20

3. Click on „**Device Manager**“, see then Fig. 22.

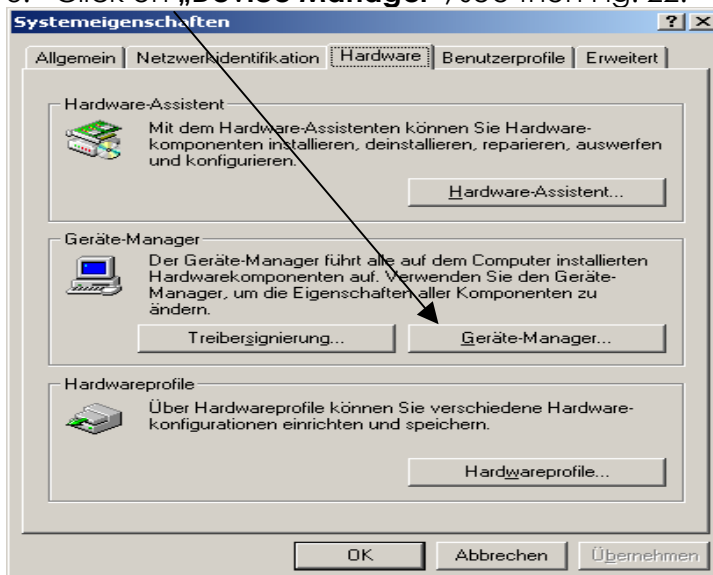


Fig. 21



4. Click on „**Communications**“.

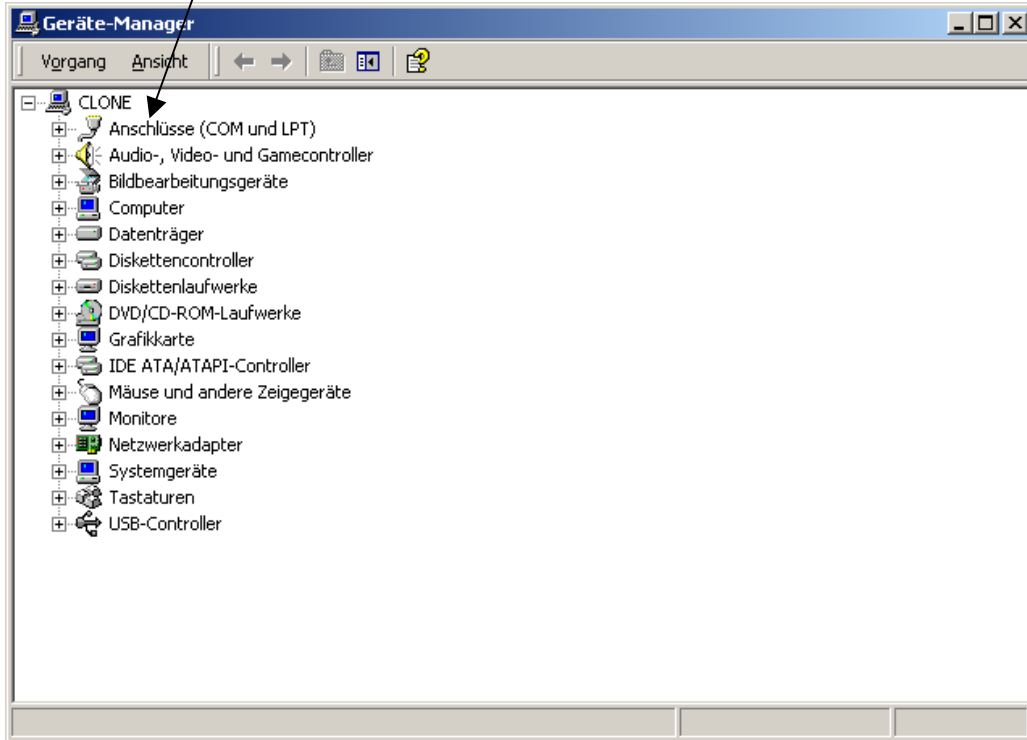


Fig. 22

5. New **USB Serial Port (COMnn)** (in this example **(COM 4)**) and „**USB Serial Converter**“ are evidenced.

Nice to know: COM Port-numbering can be changed. Double click on the new **USB Serial Port** then select register connection „**Extended...**“ select new “ **COM number:**“ if required.



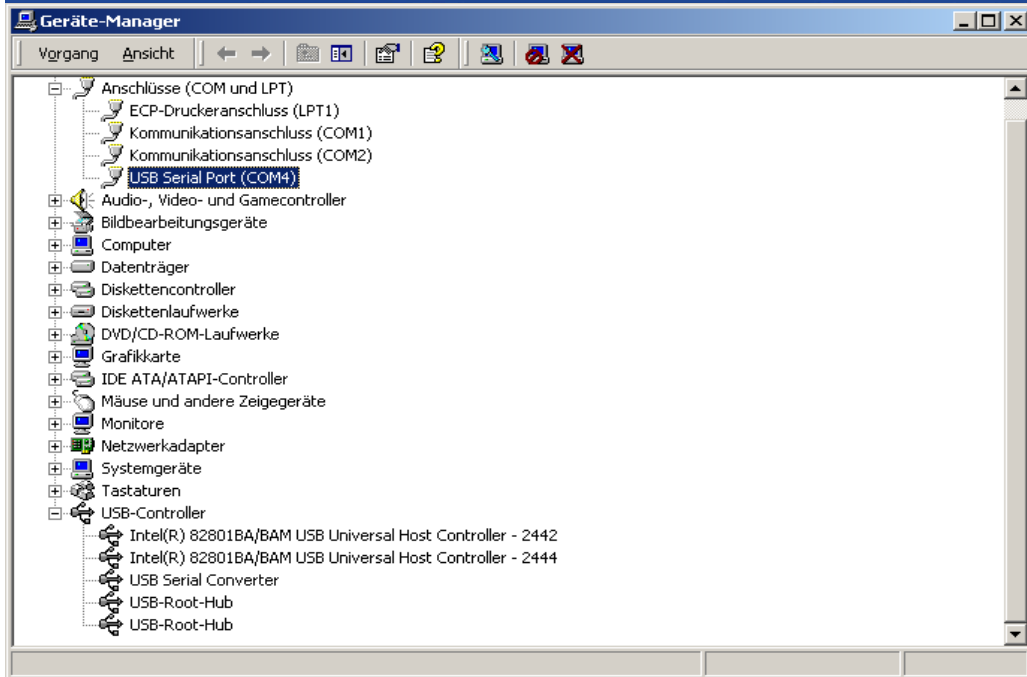


Fig. 23

Access version 2

1. Click on the Windows „Start“ icon, then select Adjustment - Systemcontrol, and double click on „**System**“, to arrive on „**System properties**“, see Fig. 25

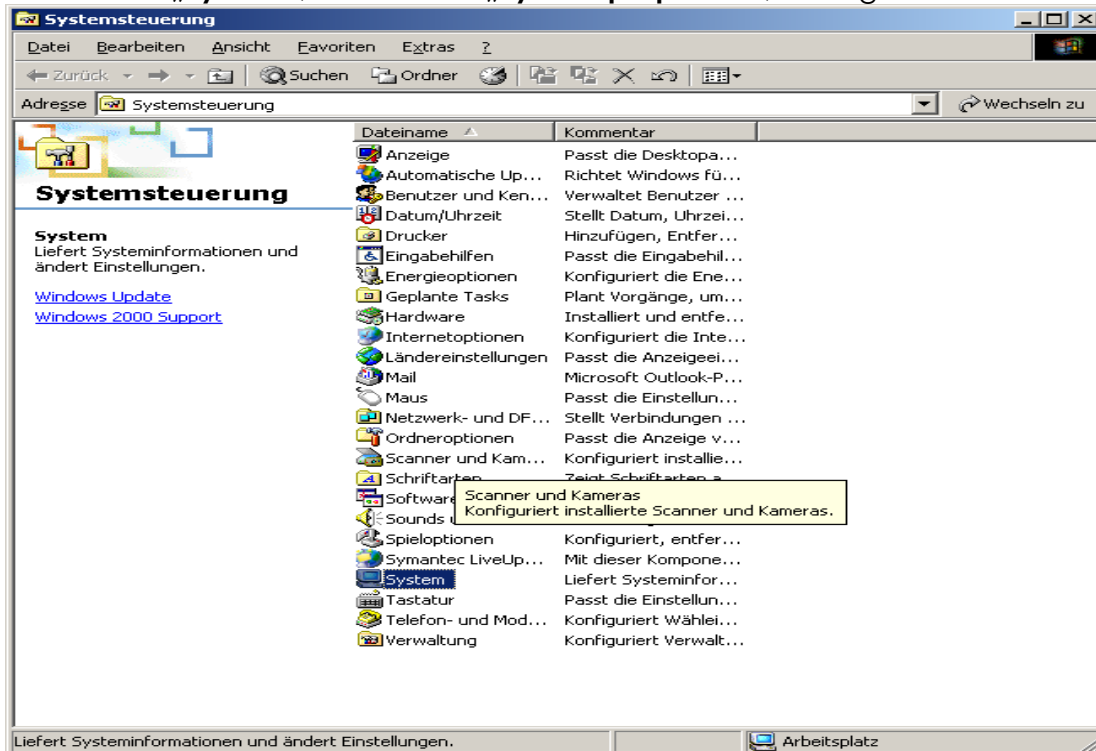


Fig. 24



2. Click on „Hardware“

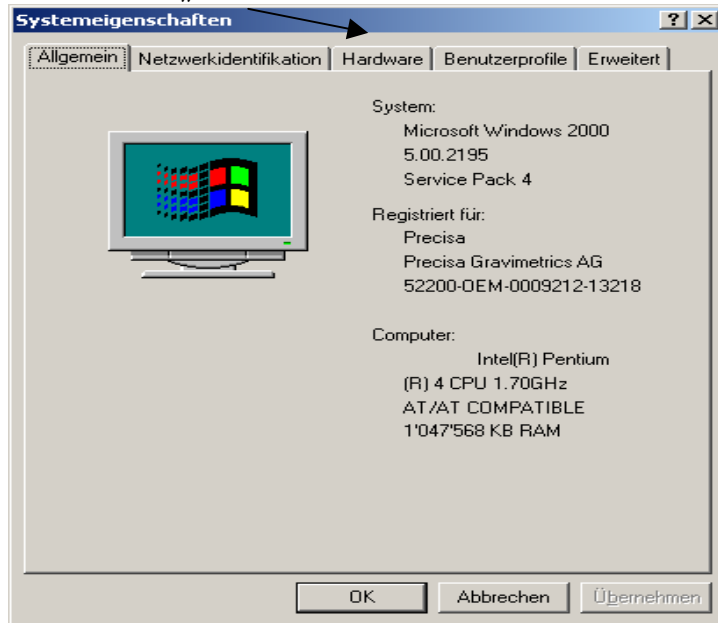


Fig. 25



3. Click on „Device manager“

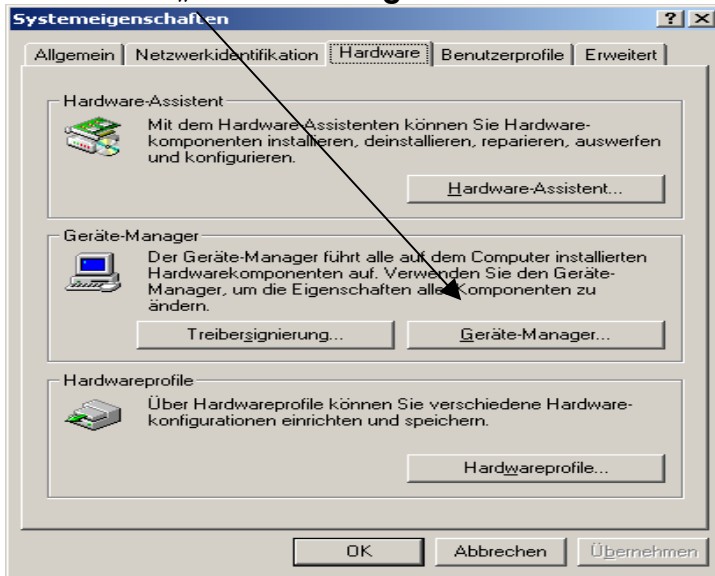


Fig. 26

4. Click on „Connections“.

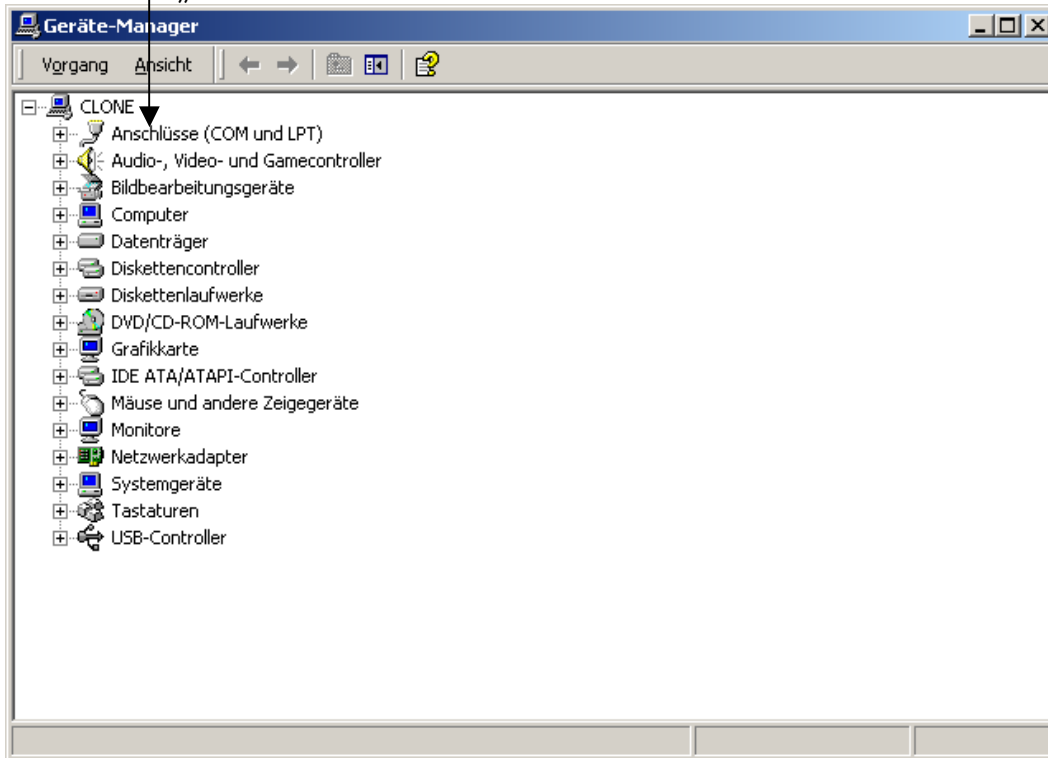


Fig. 27



New **USB Serial Port (COMn)** (in this example **(COM 4)**) and „**USB Serial Converter**“ are evidenced.

Nice to know: COM Port-numbering can be changed. Double click on the new **USB Serial Port** then select register connection „**Extended...**“ select new “**COM number:**“ if required.

